

Video Stream

version 1.0

This module includes video stream management operations which are described below.

State of Video Streams: Displays the *Video Streams* dialog box where the user can get information about the imported video streams and their attributes. By double clicking on a video stream a DIVA3D Media Player window is created where the user can view the selected video stream.

- **Release Video Stream:** Displays the *Video Streams* dialog box but with a *Release* button instead of *Continue*. By selecting a video stream and pressing Release, the memory occupied for the video stream is released and the video stream is destroyed. The user can select and destroy more than one video streams, using the *Release* button, before closing the dialog with the *Close* button.
- **Video Stream Parameters:** Displays the dialog box shown in Figure 1 where the user specifies parameters related with the video stream buffer data structure and its members. It must be noted that each video operation has an input and an output video stream.

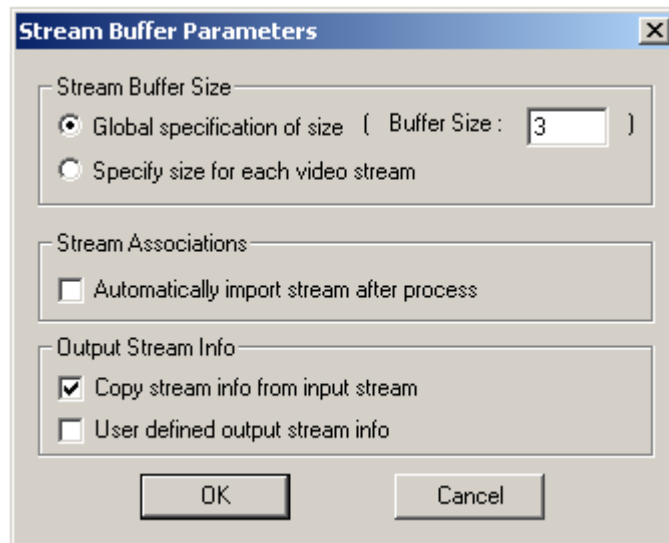


Figure 1: Stream Parameters Dialog Box

The *Stream Buffer Size* field is used to specify the size, in number of frames, of the video stream buffer of the video stream. It can be either defined once, and this definition will apply to all the video files imported afterwards, by checking the *Global specification of size* checkbox and defining the default video stream buffer size in the *Buffer Size* edit box, or it can be defined each time a video file is imported with the *Specify size for each video stream* checkbox. Once the buffer size is chosen, all the video streams created from that time on will be created with that video buffer size.

The only way, besides this dialog box, to change the buffer size is via the dialog box in Figure 3 (displayed in operations that apply only to the contents of the video stream buffer).

The *Stream Associations* field defines if the output video stream will be automatically imported after an operation has finished. If this checkbox is unchecked DIVA3D the user has to manually import the output video stream of an operation (through Modules->FileIO->Import menu) in order to view it or process it.

The *Output Stream Info* field is used for defining the way of filling the video stream data structure playback rate field (explained in detail in 4.1) of the created video streams during a video operation. There are two options: The user can either select to copy, for each video stream, the rate retrieved from the correspondent input video stream or to define manually the playback rate each time a video stream is created. In case of manually defining the playback rate the dialog box shown in Figure 2 appears where the user defines the Rate and Scale parameters of the AVI stream and the division of these parameters gives the playback rate.

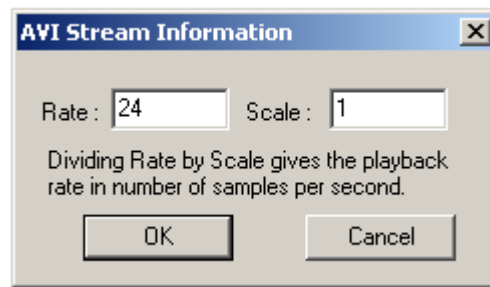


Figure 2: Dialog box defining video stream playback rate.